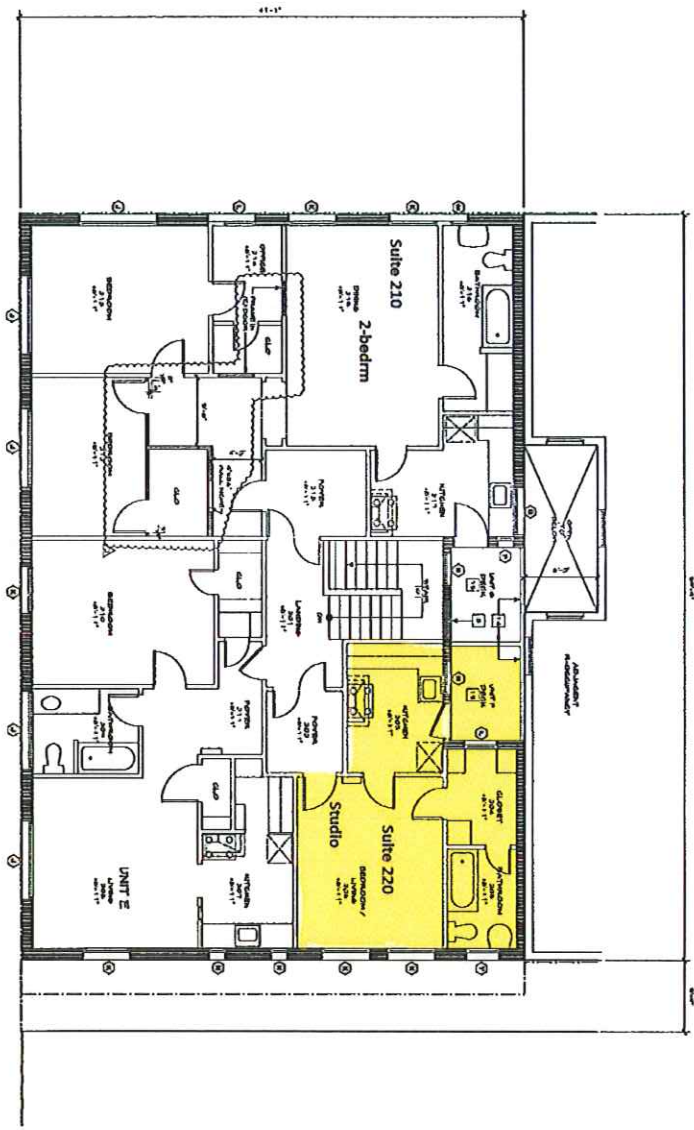


- FLOOR PLAN GENERAL NOTES**
1. All dimensions are given in feet and inches unless otherwise noted.
  2. All dimensions are given in feet and inches unless otherwise noted.
  3. All dimensions are given in feet and inches unless otherwise noted.
  4. All dimensions are given in feet and inches unless otherwise noted.
  5. All dimensions are given in feet and inches unless otherwise noted.

- FLOOR PLAN REFERENCE NOTES**
1. See Note 1 on Page 1 of this set of drawings.
  2. See Note 2 on Page 1 of this set of drawings.
  3. See Note 3 on Page 1 of this set of drawings.
  4. See Note 4 on Page 1 of this set of drawings.
  5. See Note 5 on Page 1 of this set of drawings.
  6. See Note 6 on Page 1 of this set of drawings.
  7. See Note 7 on Page 1 of this set of drawings.
  8. See Note 8 on Page 1 of this set of drawings.
  9. See Note 9 on Page 1 of this set of drawings.
  10. See Note 10 on Page 1 of this set of drawings.
  11. See Note 11 on Page 1 of this set of drawings.
  12. See Note 12 on Page 1 of this set of drawings.
  13. See Note 13 on Page 1 of this set of drawings.
  14. See Note 14 on Page 1 of this set of drawings.
  15. See Note 15 on Page 1 of this set of drawings.
  16. See Note 16 on Page 1 of this set of drawings.
  17. See Note 17 on Page 1 of this set of drawings.
  18. See Note 18 on Page 1 of this set of drawings.
  19. See Note 19 on Page 1 of this set of drawings.
  20. See Note 20 on Page 1 of this set of drawings.

**SECOND FLOOR PLAN**



**LEGEND**

--- existing structural member  
 --- existing structural member  
 --- new structural member

**PULTS**  
 Steven D. Pults, AIA & Associates, LLP

RESTORATION FOR  
**SANDER BUILDING**  
 774 BALDWIN AVENUE  
 COLUMBIA, SC 29201

**CHAMPION PROPERTIES**  
 1000 FLORENCE  
 COLUMBIA, SC 29201

**ARCHITECT**  
 STEVEN D. PULTS, AIA  
 1000 FLORENCE  
 COLUMBIA, SC 29201

**DATE**  
 10/14/14

**PROJECT**  
 SANDER BUILDING RESTORATION

**SCALE**  
 1/8" = 1'-0"

**NO.**  
 A-2