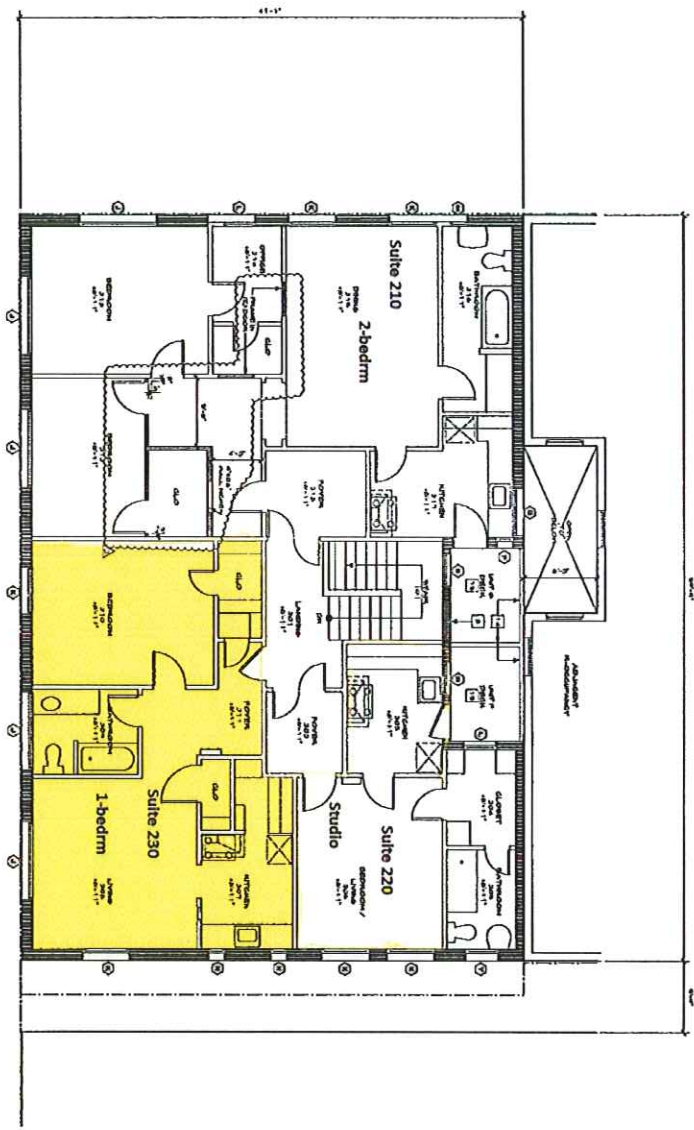


- FLOOR PLAN GENERAL NOTES**
1. In the preparation of this plan of construction, the owner has provided the following information:
 2. The building is located at the address shown on the site plan.
 3. The building is to be constructed in accordance with the applicable building code.
 4. The building is to be constructed in accordance with the applicable zoning ordinance.

- FLOOR PLAN REFERENCE NOTES**
1. Suite 210, 211, 212
 2. Suite 220, 221, 222
 3. Suite 230, 231, 232
 4. Suite 240, 241, 242
 5. Suite 250, 251, 252
 6. Suite 260, 261, 262
 7. Suite 270, 271, 272
 8. Suite 280, 281, 282
 9. Suite 290, 291, 292
 10. Suite 300, 301, 302
 11. Suite 310, 311, 312
 12. Suite 320, 321, 322
 13. Suite 330, 331, 332
 14. Suite 340, 341, 342
 15. Suite 350, 351, 352
 16. Suite 360, 361, 362
 17. Suite 370, 371, 372
 18. Suite 380, 381, 382
 19. Suite 390, 391, 392
 20. Suite 400, 401, 402



SECOND FLOOR PLAN

LEGEND

--- existing structure exterior wall
 --- existing structure interior wall
 --- new structure exterior wall
 --- new structure interior wall

PULTS
Steven D. Pults, AIA & Associates, LLP

RESTORATION
FOR
**SANDERS
BUILDING**

774 BALTIMORE AVENUE
BALTIMORE, MD 21201

**Charles
Properties**
MANAGEMENT
CORPORATION
1801 S. BROADWAY
BALTIMORE, MD 21204

DATE: 9/24/14
PROJECT: SANDERS BUILDING
SCALE: AS SHOWN
BY: JDP
DATE: 9/24/14

PROJECT: SANDERS BUILDING
DATE: 9/24/14