



## 892 Aerovista Lane

### Property Description:

City: San Luis Obispo, California

Size: 9,000 SF to 36,200 SF (Two floors at 18,100 SF per floor)

\* Price: \$1.95/SF, NNN with a \$25/SF Tenant Improvement Allowance

Parking: Abundant

Notes: **Class A Office Currently Under Construction.** This is the ideal commercial space right on the corner of Broad St. (HWY 227) and Aerovista, with visible signage and company identification opportunities, and it's just a quick walk to the airport. The flexible interior space planning will be based on tenants needs. Suites are available from 9,000 to 36,200 SF. The building will offer beautifully landscaped outdoor spaces and patios perfect for employees who enjoy working in the fresh air. With rolling hills on all sides and vineyards nearby, this space offers spectacular views. This project is fully entitled with the City of San Luis Obispo, enabling a quick start on construction and tenant move in. Tenant Improvement Allowance: \$25/SF.

\* Price and improvement allowance are based upon current interest rates/market conditions and are subject to change.

DEREK SENN  
CHARLEY SENN, SIOR

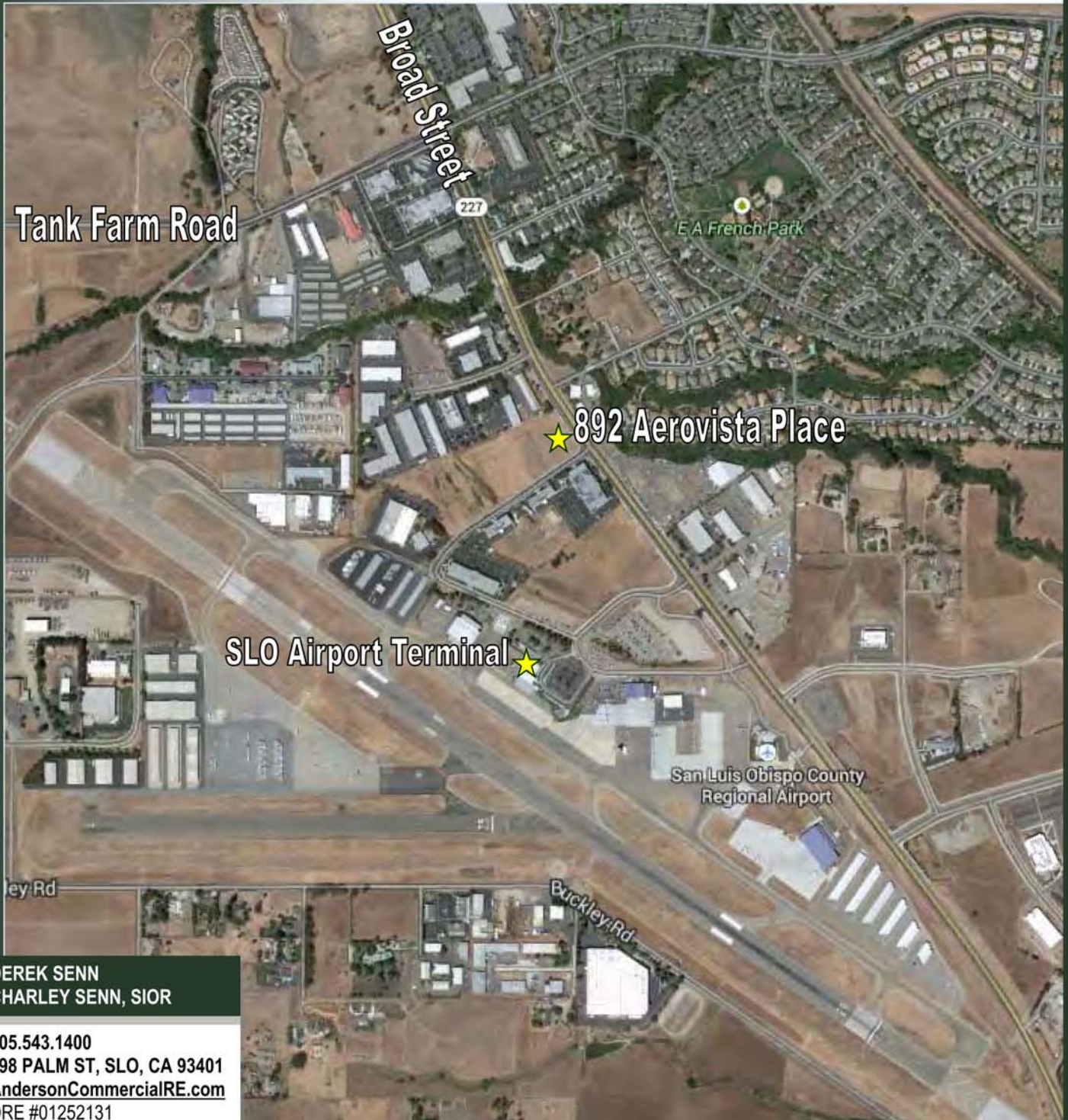
805.543.1400  
798 PALM ST, SLO, CA 93401  
[AndersonCommercialRE.com](http://AndersonCommercialRE.com)  
DRE #01252131



# ANDERSON COMMERCIAL

REAL ESTATE SERVICES

## 892 AEROVISTA



DEREK SENN  
CHARLEY SENN, SIOR

805.543.1400  
798 PALM ST, SLO, CA 93401  
[AndersonCommercialRE.com](http://AndersonCommercialRE.com)  
DRE #01252131