

SLO Office Space 810 Fiero Lane, Suite 100 (First Floor Only)



Location: Close to FedEx and San Luis County Airport
Size: approx. 9,668/sf, first floor
Zoning: Commercial Service Business Park (County)
Parking: 25 designated parking spaces
Electrical Capacity: ample power
Communications: fiber connection, DSL, cat5e cabling, multiple ports at each work station
Base Lease Rate: \$1.30/sf + NNN
Utilities: Paid by tenant
Terms: Tailored to suit your business
Available: Now
 Includes some system furniture, can be reconfigured if needed), two perimeter offices, large conference room, break room, mens and womens restrooms. Located by SLO airport and Marigold Shopping Center in a quiet complex with first class tenants. Modern space, move in ready. Affordable lease rates and flexible terms. Located outside the city limits,

there are no city business tax charges to operate from this location.
 Call to set up a time to view: 805-543-0561.

Information

CONTACT INFORMATION

Sue Miles
 805-543-0561

PRICING

Rent: \$1.30
Minimum Lease: flexible
Additional Costs: NNN
Available Date: NOW!

Property Location

810 Fiero Lane, Suite 100
 San Luis Obispo, CA 93401

Links

■ www.quaglino.com

Features

Square Footage: 9,668
Floors in Bldg: 2

Located on Floor #: First
Parking Spaces: 25

Attributes

BUILDING AMENITIES

■ Walking distance to FedEx

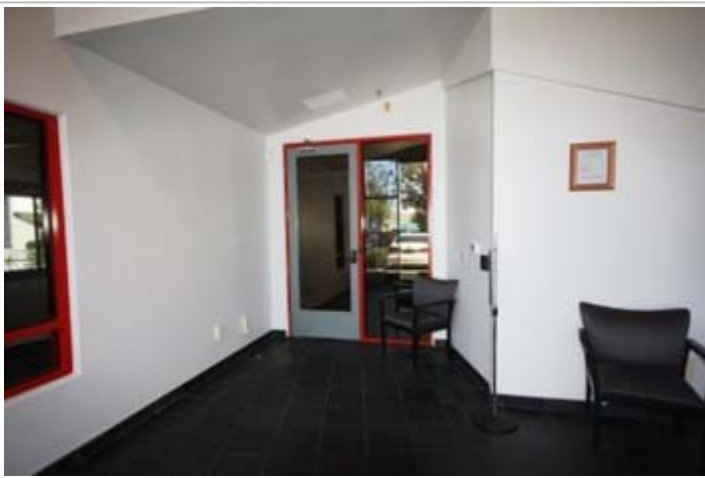
OFFICE AMENITIES

■ Kitchen ■ Conference Room ■ Common Entry Lobby

Photo Gallery



Photo Gallery



SUE MILES | 805-543-0561

Photo Gallery



SUE MILES | 805-543-0561

Photo Gallery



SUE MILES | 805-543-0561

POWERED BY VFLYER.COM

VFLYER ID: 314900005

All information in this site is deemed reliable but is not guaranteed and is subject to change